



**COMMUNITIES
HEALTH AFRICA
TRUST**

**BI-ANNUAL
UPDATE
JAN-JUN 2025**

Overview

Problem statement

A lack of access to family planning (FP) information and service, contributes to poverty, suffering, and environmental degradation, which negatively impacts communities and their surrounding ecosystems.

CHAT's mission

To support underserved individuals and communities in fragile ecosystems across Kenya to access family planning information and services

CHAT's goals are;

1. **Increase access** and use of family planning.
2. **Enable positive behaviour change** for increased family planning uptake and environmental sustainability.
3. **Increase empowerment and resilience** of communities through self-sustaining governance structures.

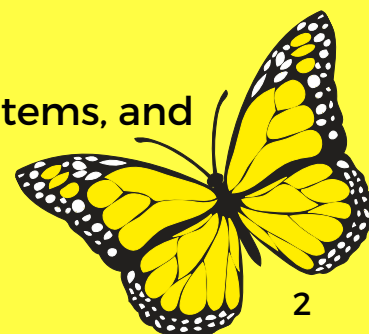
Impact Statement

Aligned with their PHE integrated approach, CHAT is dedicated to **improving quality of life** through community-driven solutions that reduce poverty, protect the environment, and promote lasting wellbeing.

With donor support, these efforts can scale to reach more communities, amplifying both human and environmental impact.

CHAT's People's Health & Environment (PHE) approach recognises the vital connection between human and animal health and the environment. By addressing these areas together, CHAT supports communities to thrive sustainably. To further strengthen this impact, CHAT is strengthening its animal (wildlife and livestock) component within its PHE model. This addition helps reduce the risk of animal-to-human disease transmission, protects livelihoods, and promotes healthier ecosystems for people and nature alike.

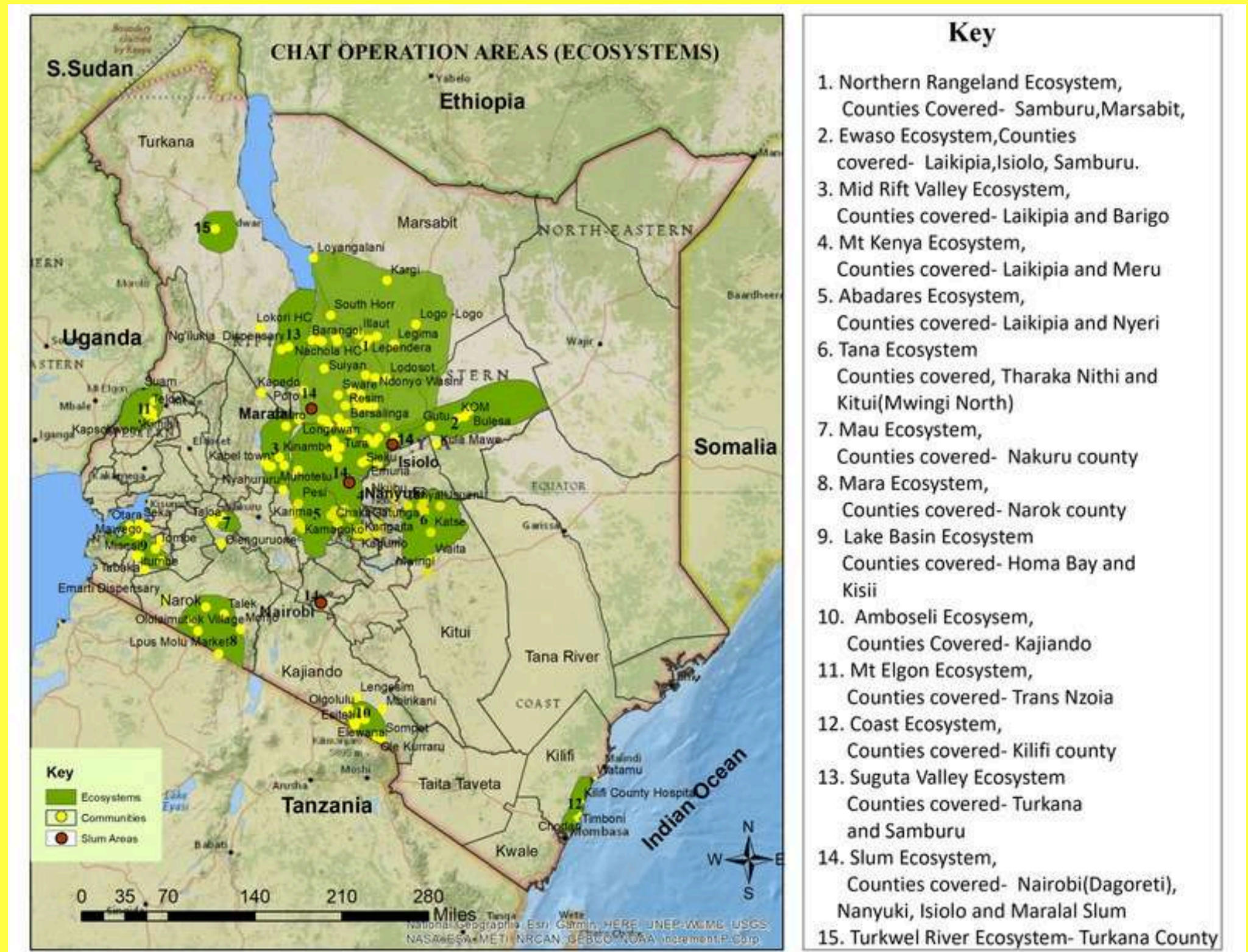
When we invest in family planning, we invest in healthier communities, stronger ecosystems, and a more equitable future.



An overview of CHATs present operation areas

Currently, CHAT works in **15** ecosystems spread across **19** counties in Kenya. These places are of diverse cultures and environments.

Below is a more detailed overview of each ecosystem, together with CHAT's achievements for the past six months Jan - Jun 2025



6 mths Outcome Snapshot (Jan-Jun 2025)

Progress toward CHAT's Impact Goal of Improving Quality of Life for All.



67 Community Own Resource Persons (CORP, grassroots partners of CHAT) supported.



64 "Rider" (motorbike) partners supporting FP commodity distribution and Tuberculosis (TB) sample referrals in 2 counties- Isiolo & Laikipia (spread through 3 ecosystems)



41,851 clients accessed different FP pregnancy protection methods (**contraception**) of their choice of which **24,953** chose long term pregnancy protection methods of 3, 5 or 12 years.



71,660 individuals reached via sessions incorporating positive **behavior change awareness** with a focus on family planning, gender based violence (GBV) & TB through CHATs People Health & Environment (PHE) approach.



4,305 patients provided with basic curative treatment.



16 Motor Mobile integrated health clinic outreaches in hard to reach areas camping out in the manyattas while serving communities.



521 households of **TB patients** were visited for contact screening and referrals for presumptive cases.

Family planning is not about numbers; it's about empowering individuals and families to improve their quality of life."

Gro Harlem Brundtland, former Prime Minister of Norway



Community Own Resource Persons (CORPs): CHAT's Grassroots Program Partners



CORPs are trusted community members identified by their own communities to partner with CHAT. Their main activities include:

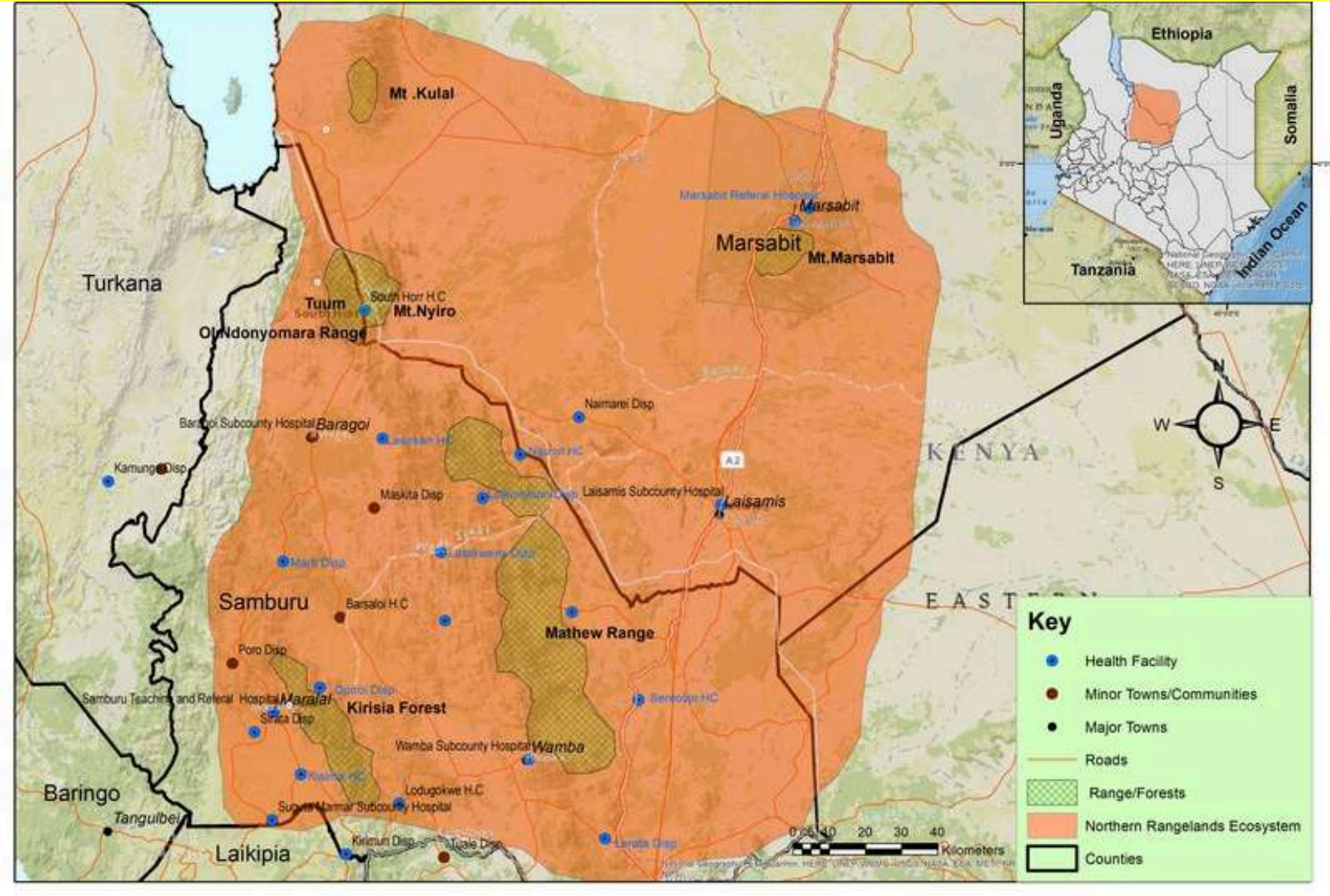
- Mobilizing and delivering door-to-door FP services.
- Serve as a vital link between CHAT and local communities.
- Address a wide range of issues, including FP, health, environment, and livelihoods.
- Build strong referral systems to ensure effective linkages between communities and health facilities, as well as other essential community support services (e.g., for gender-based violence survivors, persons with disabilities, access to clean water, and more).






CHAT has a performance-based MoU with their grassroots partners (CORPs). The CORPs often balance their own small businesses with their role in implementing CHAT's Back Pack Strategy. This involves providing door-to-door integrated FP sensitisation, mobilisation, and referrals.

Key to CHAT's ecosystems data.

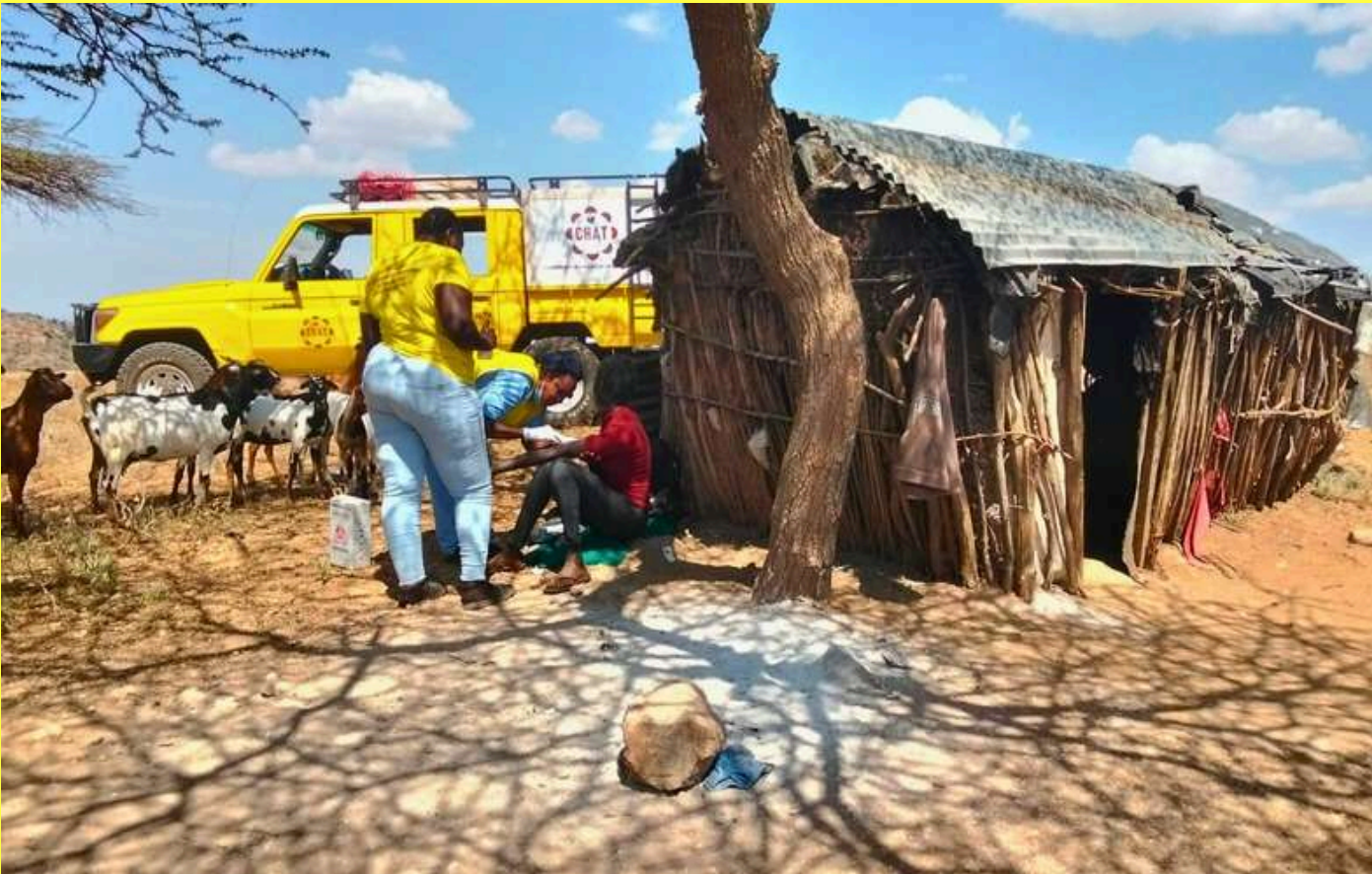
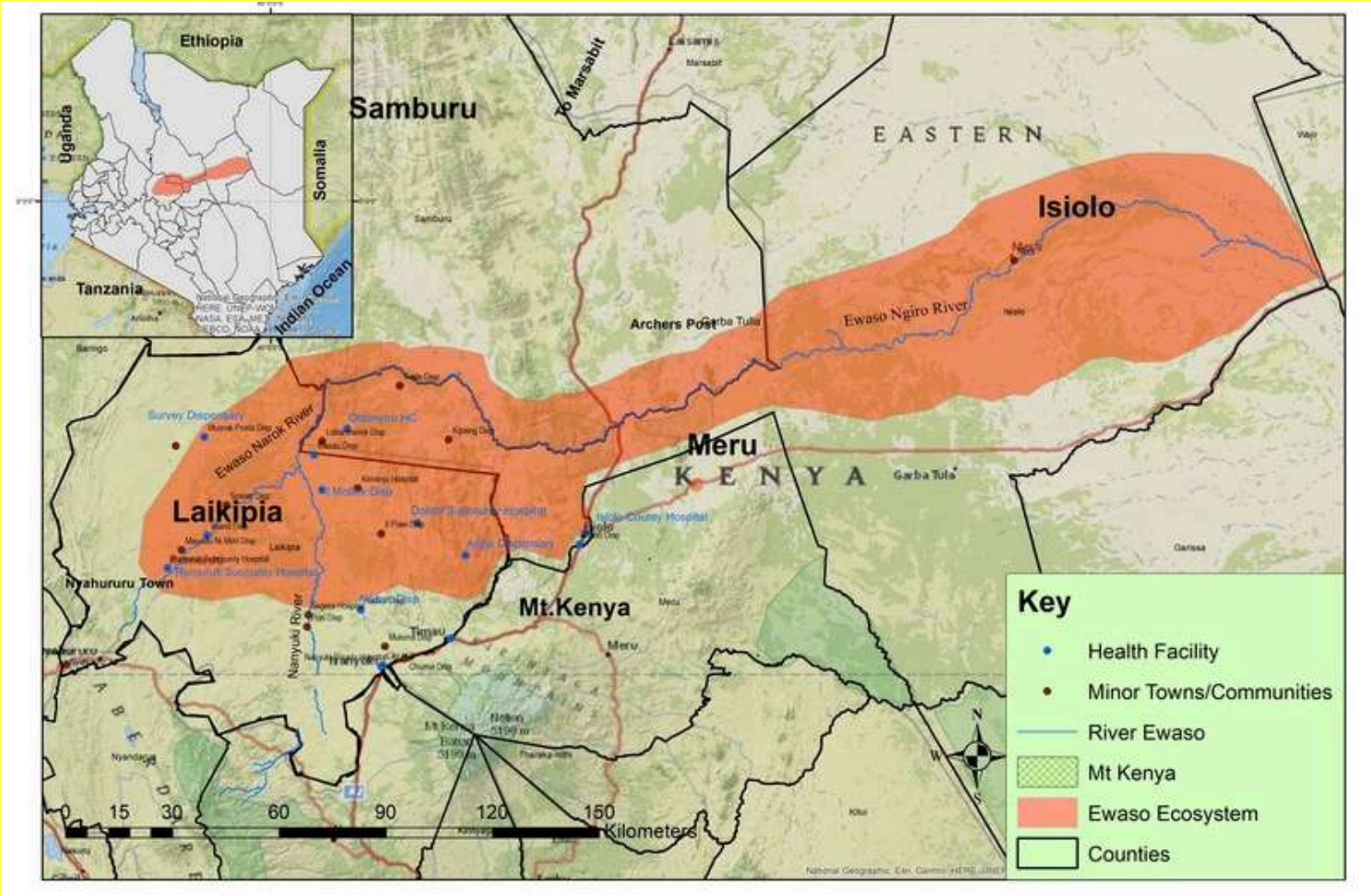
	Nos. of CORP partners		Clients accessed different FP pregnancy protection methods (contraception) of their choice.
	Nos. of individuals reached via sessions incorporating positive behavior change awareness using CHATs innovative People Health & Environment (PHE) approach.		Nos. patients provided with basic curative treatment
	"Rider" (motorbike) partners supporting FP commodity distribution and Tuberculosis (TB) sample referrals in 2 counties- Isiolo & Laikipia (spread through 5 ecosystems)		Due to security and cost challenges, CHAT no longer implements the camel mobile clinic
	Motor Mobile integrated health clinic reaching underserved communities camping out while serving communities.		<i>A healthy community ensures a healthy environment.</i>







Northern Rangelands Ecosystem



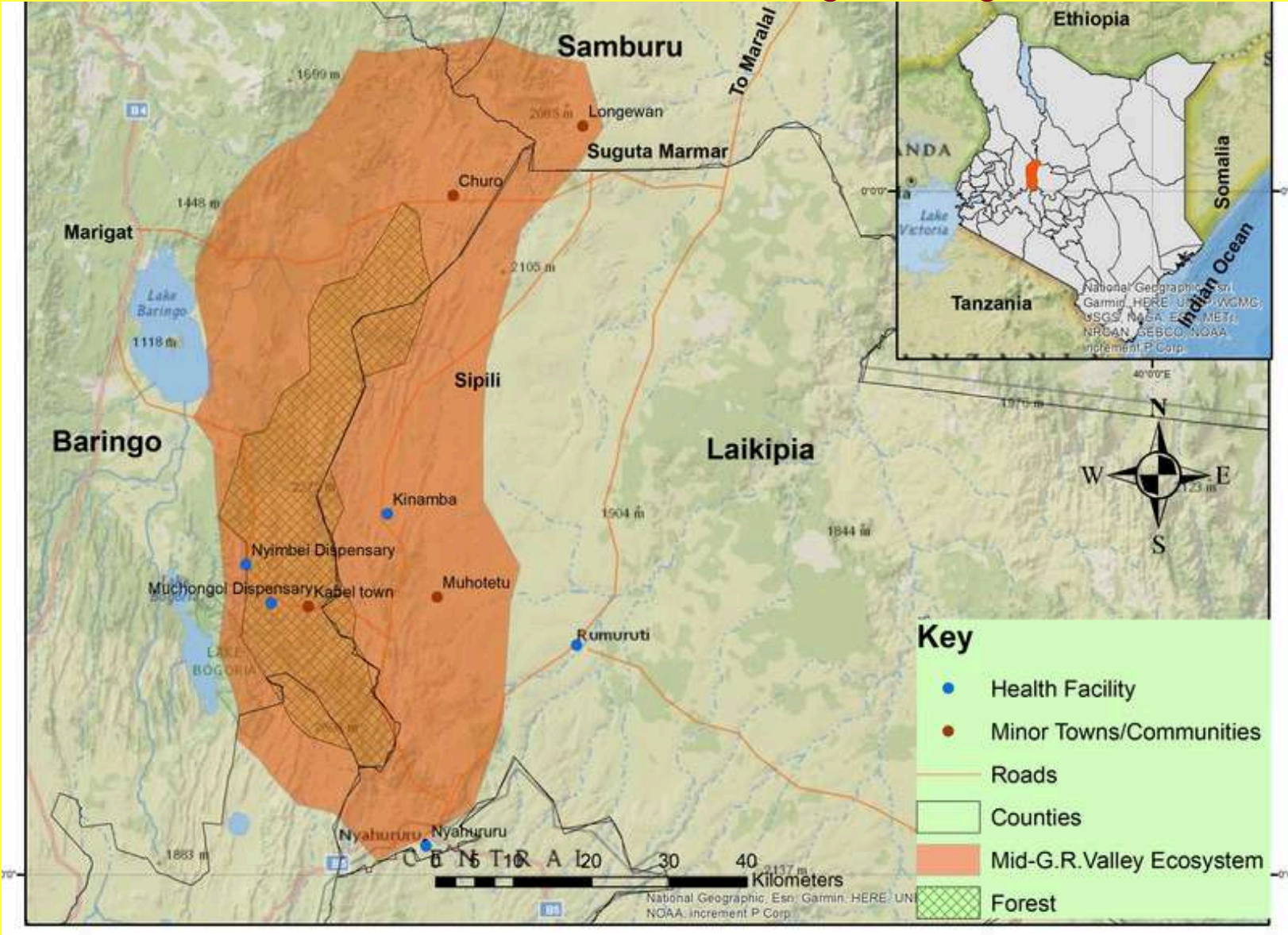
	23
	13,710
	21,843
	1628
	4

Ewaso Nyiro River Ecosystem



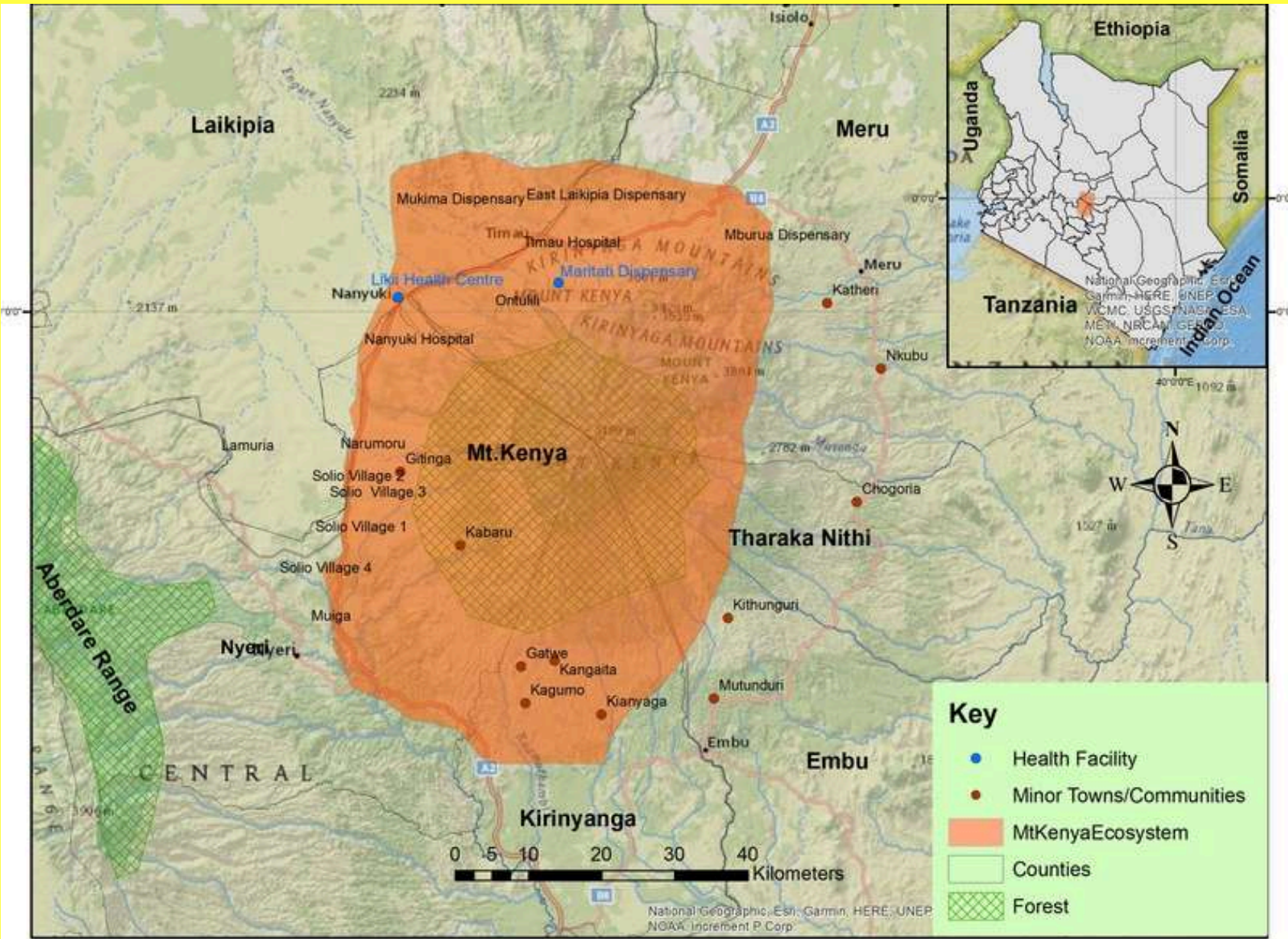
	17
	12,398
	16,297
	1,962
	35
	4




Mid-Eastern Great Rift Valley Ecosystem



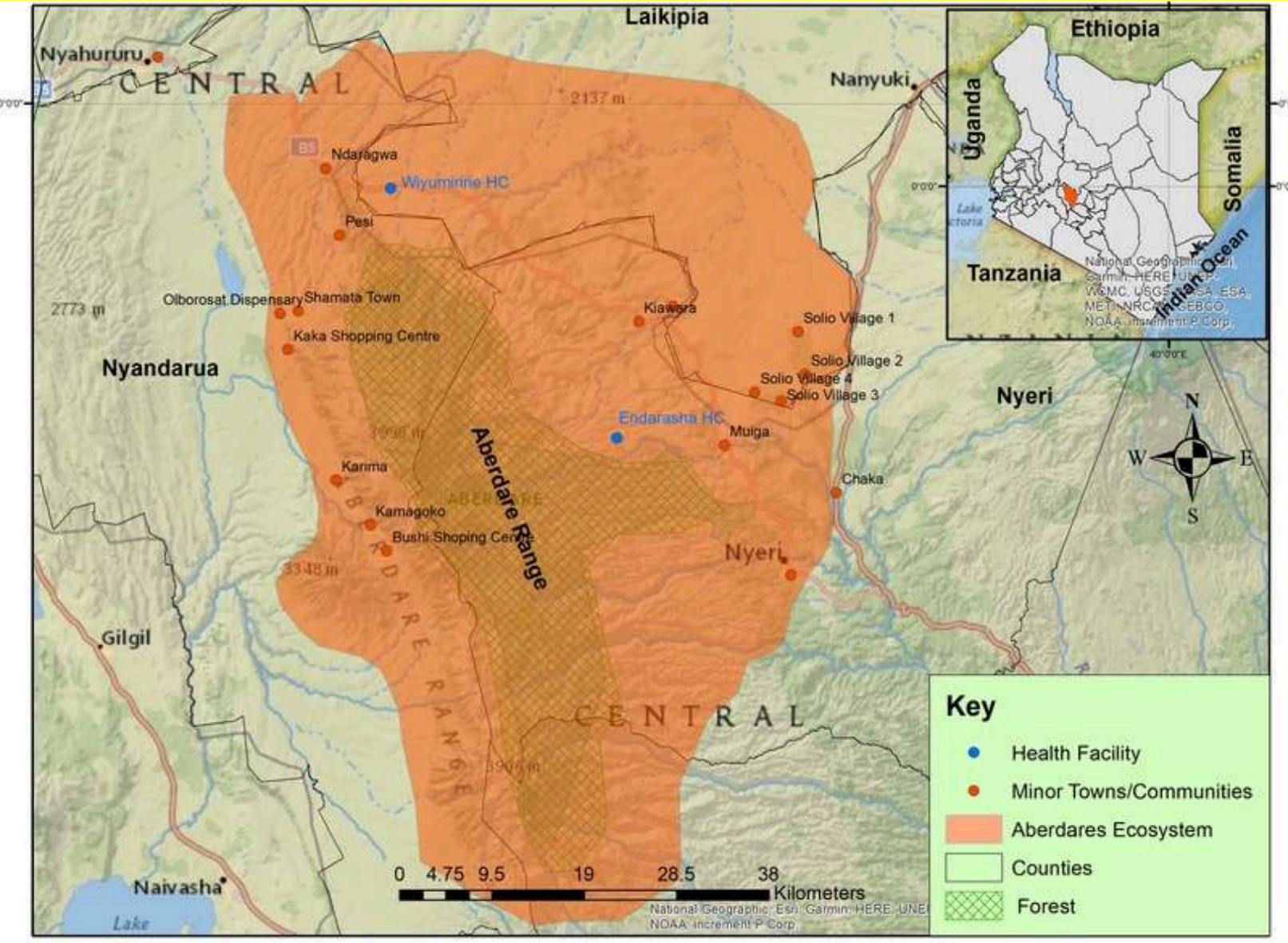
	1
	643
	1,092






Mt. Kenya Ecosystem



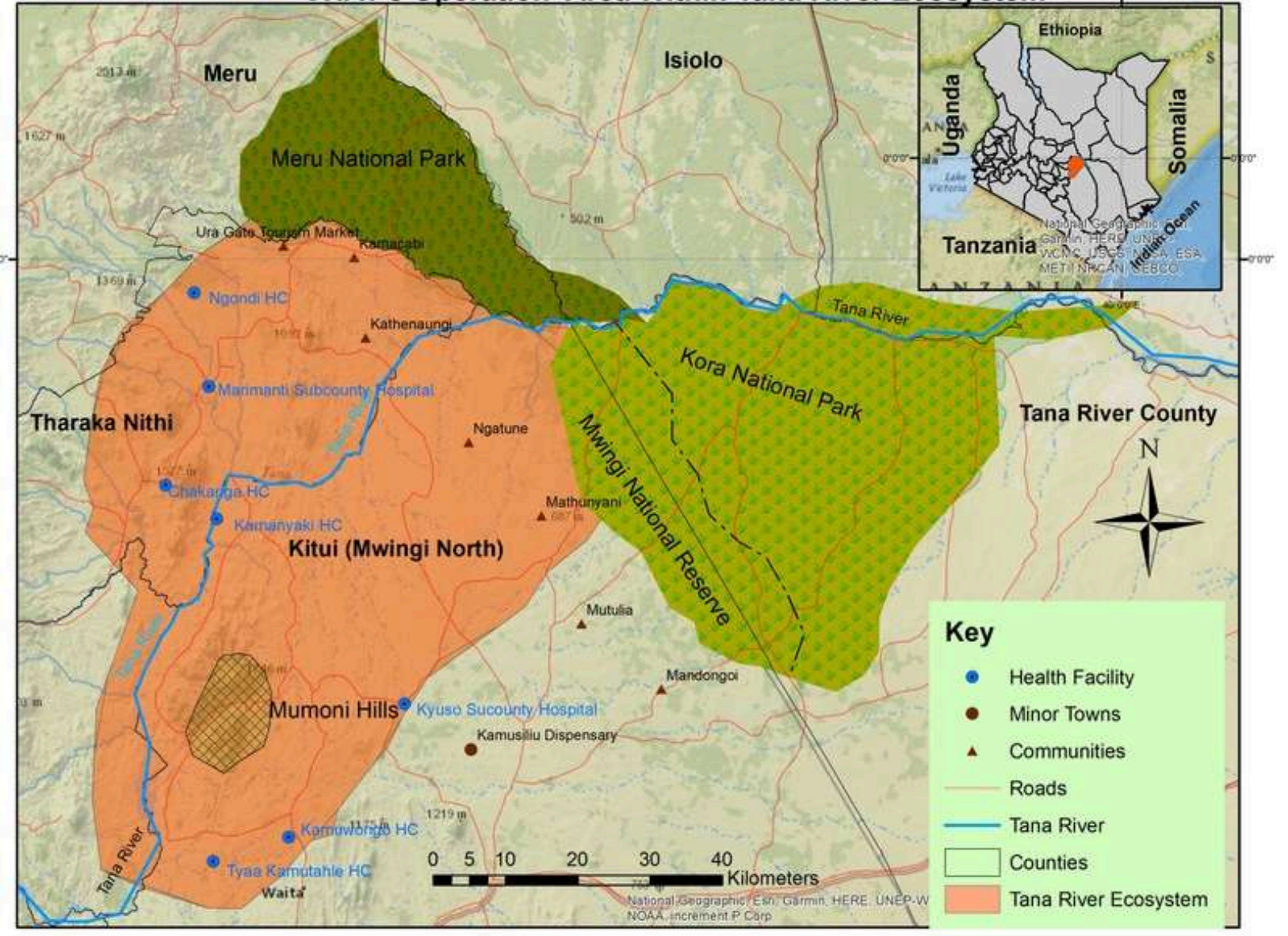
	2
	1,711
	1,809

Aberdare Mt. Range Ecosystem



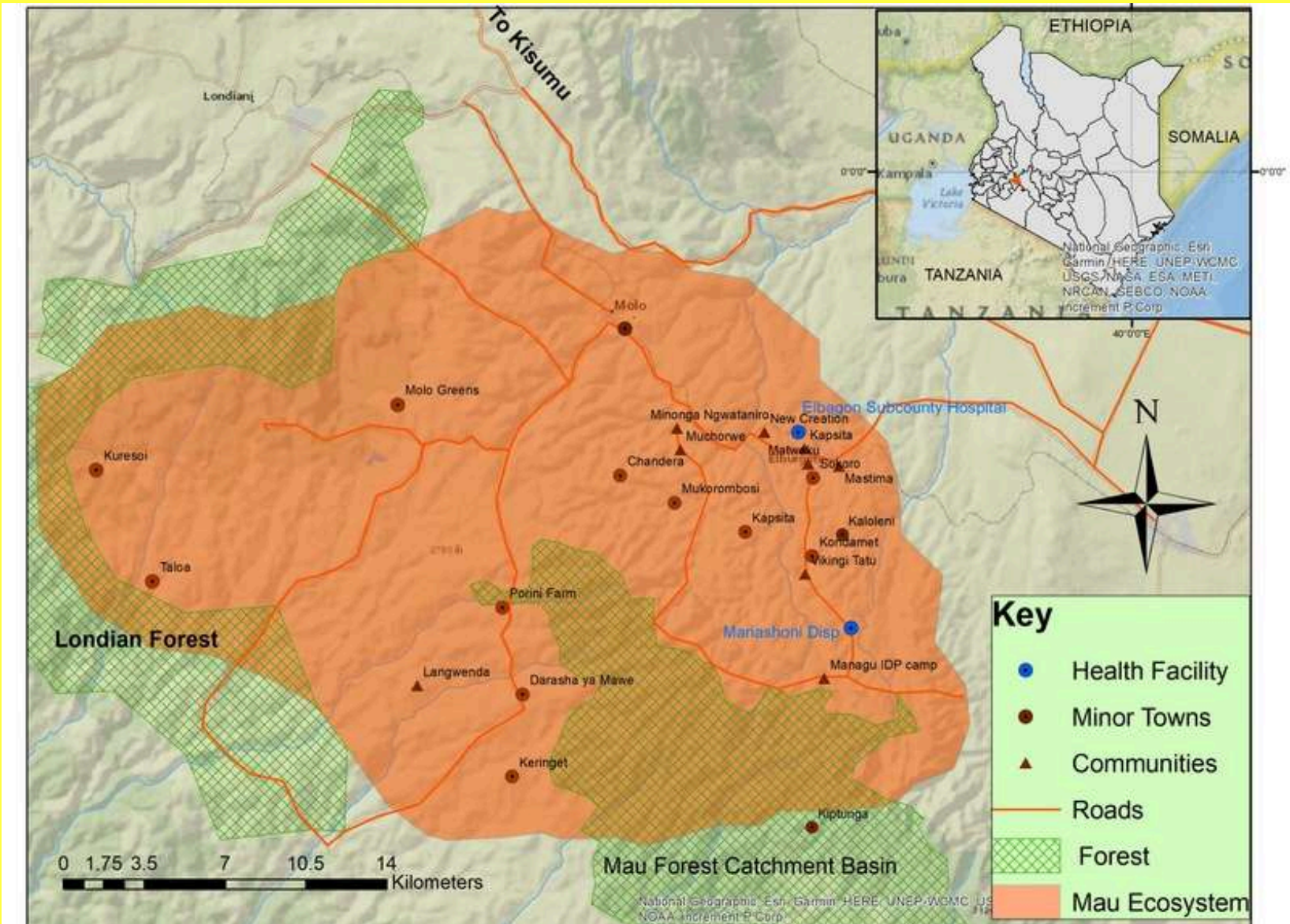
	1
	177
	1,680
	169
	3

Tana River Ecosystem



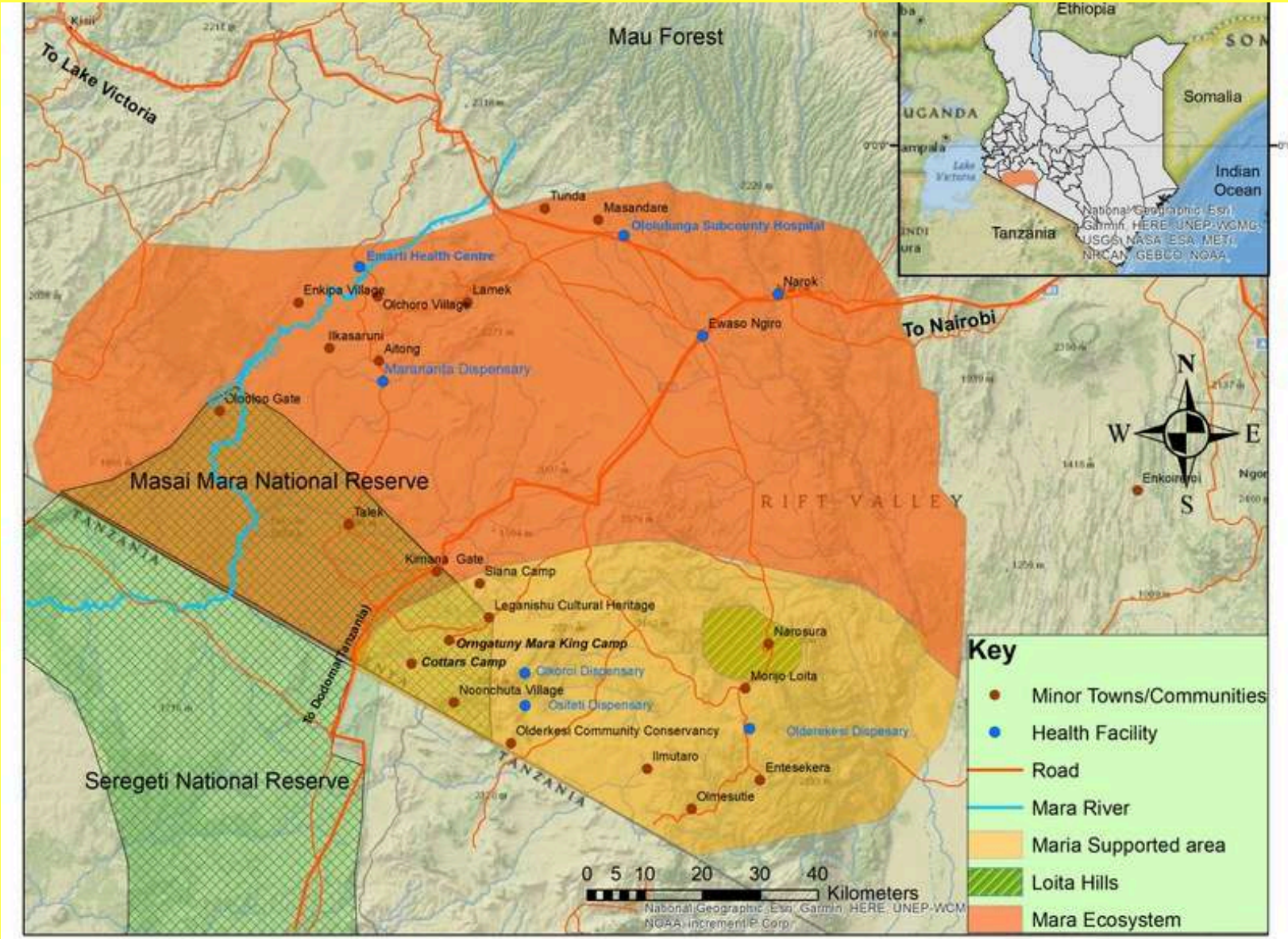
	3
	1,427
	3,279
	561
	2

Mau Forest Ecosystem



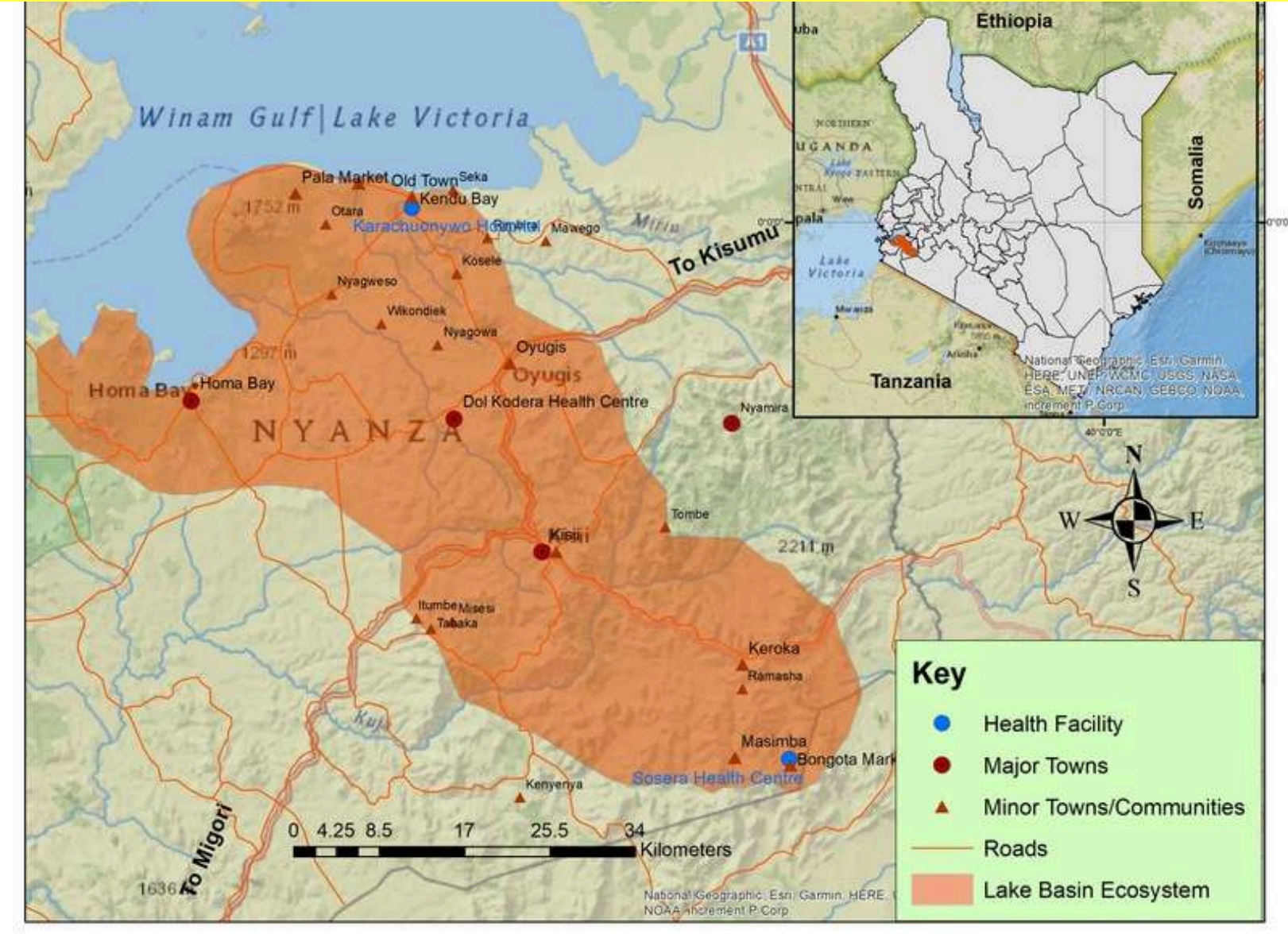
	2
	1,374
	2,201

Mara Wildlife Ecosystem



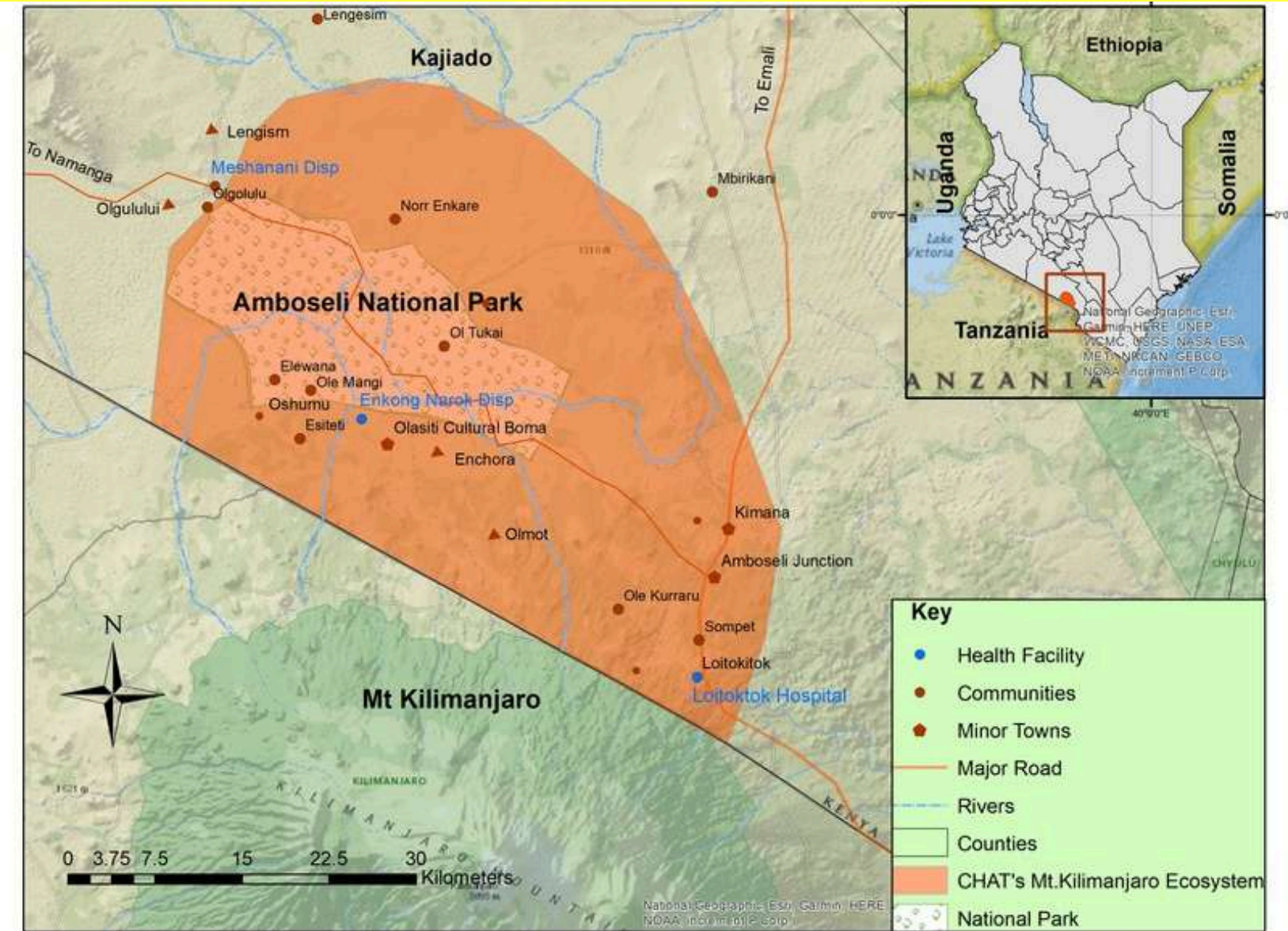
	5
	2,658
	128
	3,295




Lake Victoria Basin Ecosystem



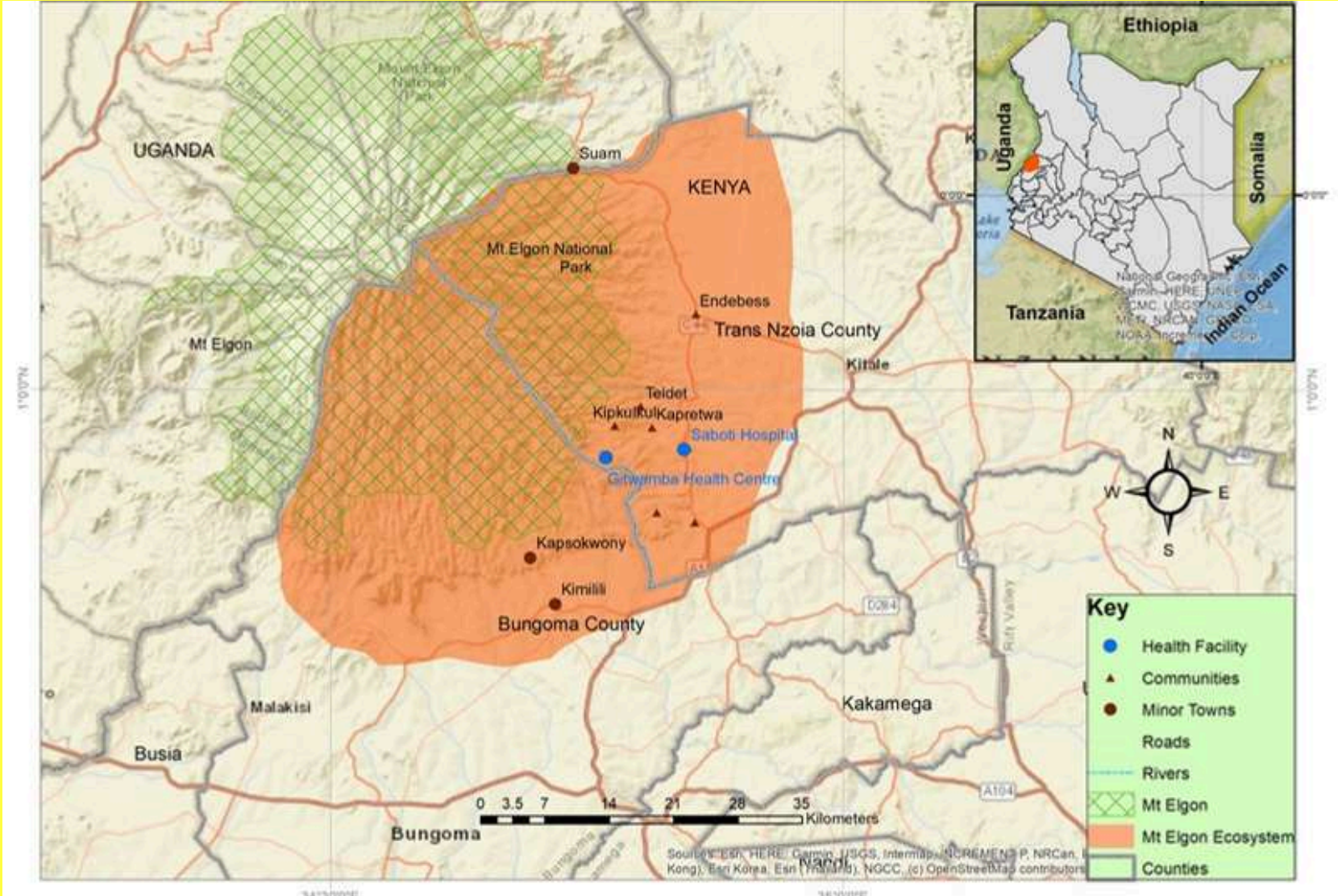
	2
	1,989
	98
	2,221

Mt Kilimanjaro (Amboseli) Ecosystem



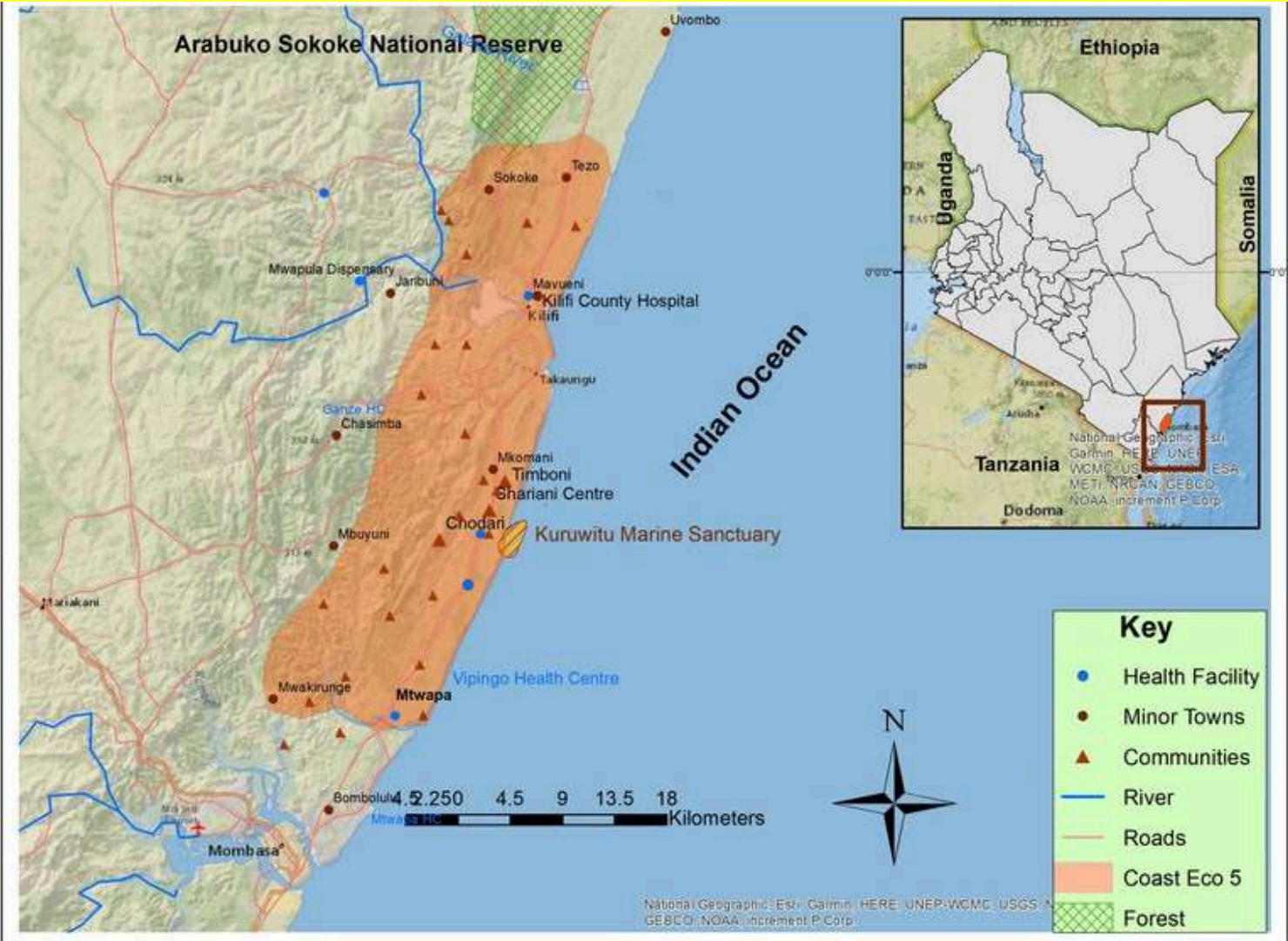
	2
	1203
	2,405




Mt. Elgon Ecosystem



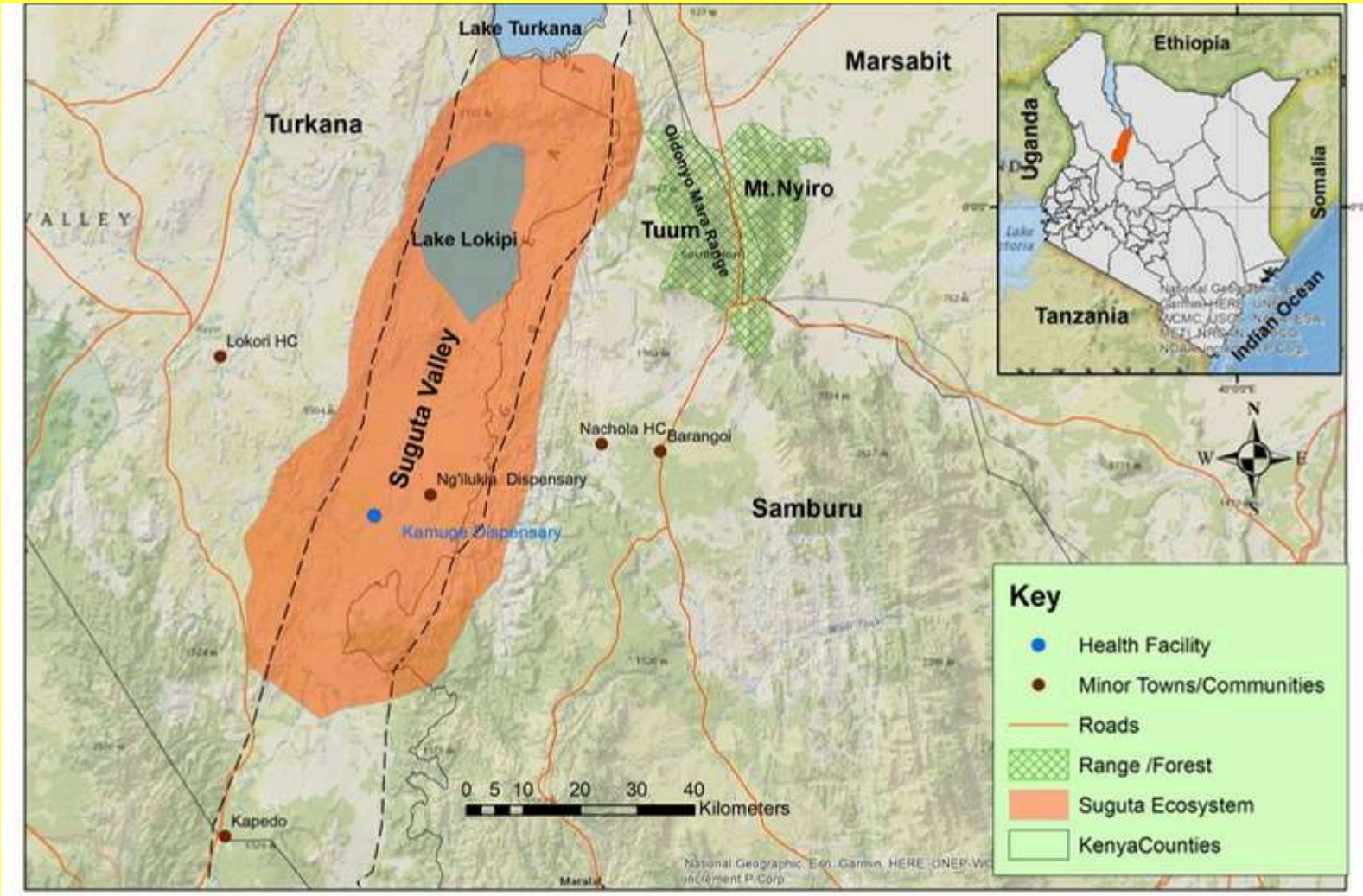
	2
	1,513
	3,418
	110

Coast Marine Park Community Ecosystem



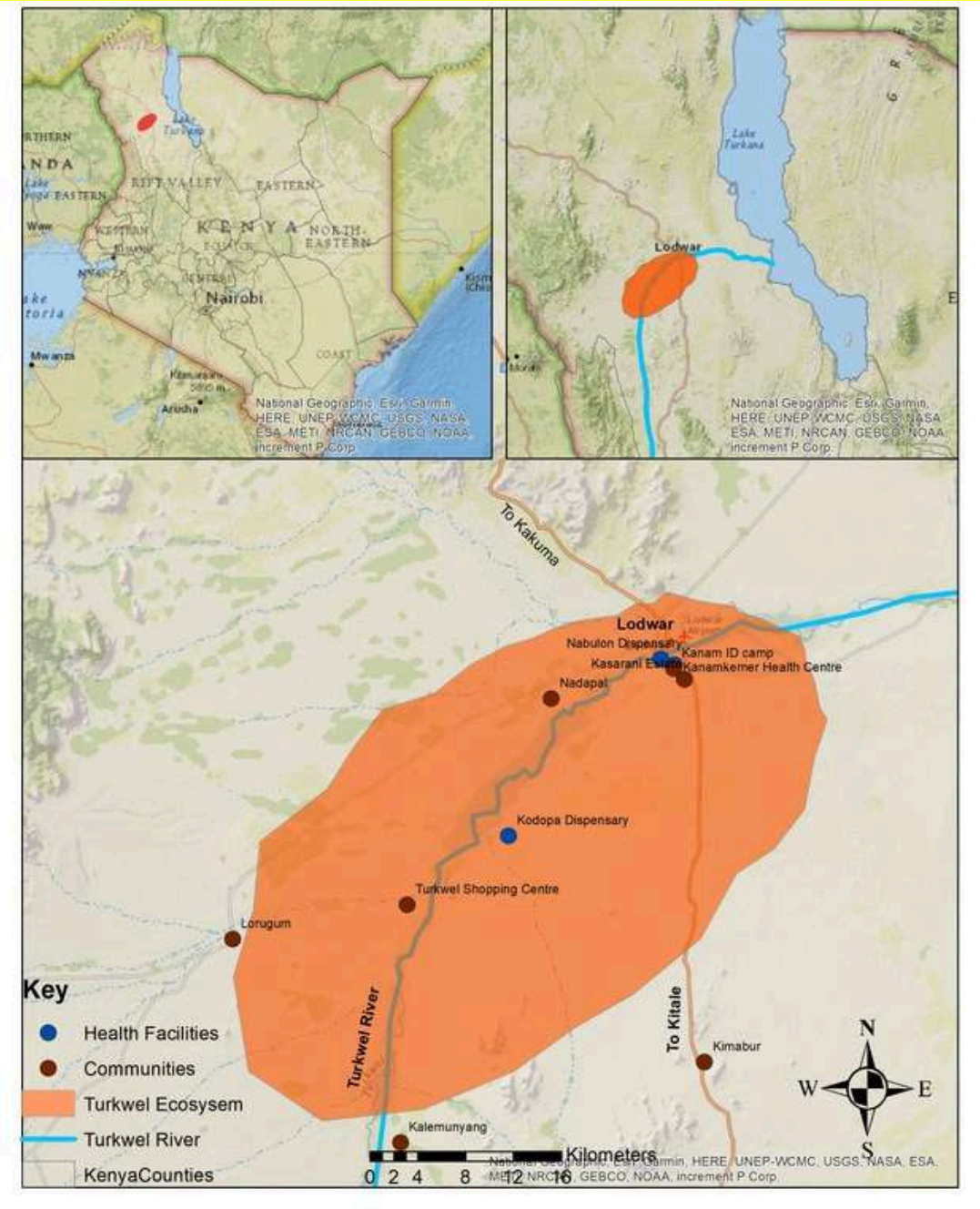
	1
	929
	1,923

Suguta Valley Ecosystem



	1
	433
	1,119

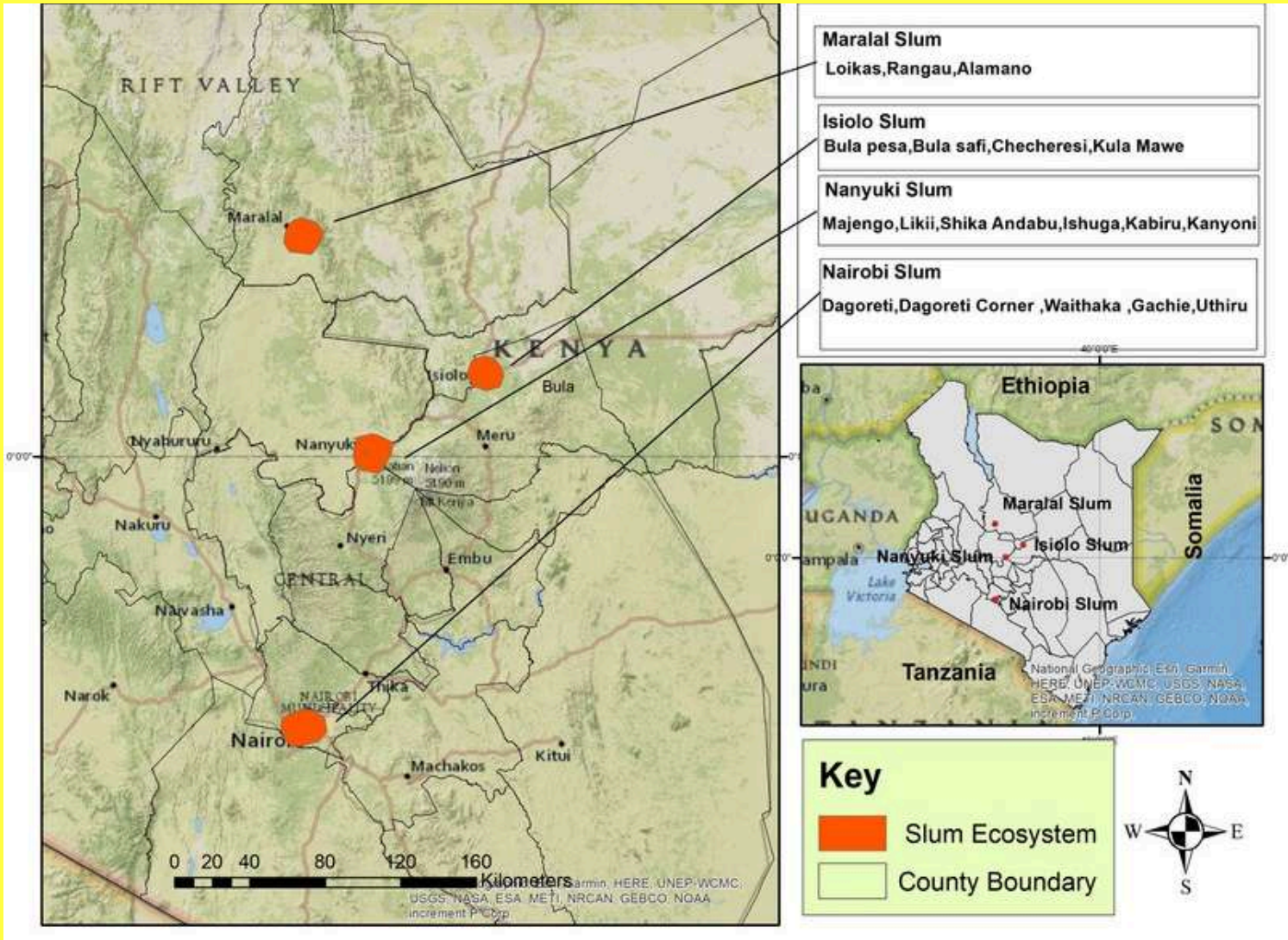
Turkwel River Ecosystem



Handover of a backpack and flipchart to the newly identified CORP Mishel (in black skirt) in Lodwar by Mentor CORP Lokipi, who spent time mentoring her on effective ways to reach the community with much-needed family planning (FP) information and services, with support from Ministry of Health healthcare workers (nurses and clinicians).

	1
	107
	368

Slum Ecosystem

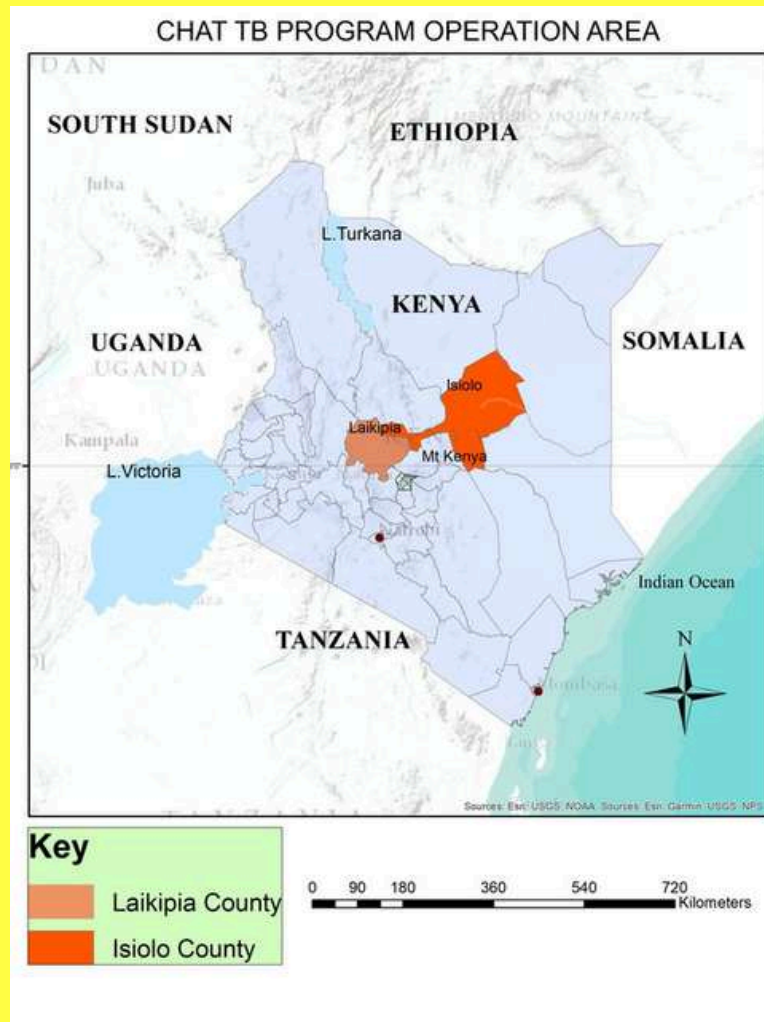


	5
	3,771
	4,622
	26

Integrating a TB Project in Laikipia & Isiolo Counties (in northern Kenya)

"The fight against TB is part of the fight against poverty".

Nelson Mandela



CHATs integrates TB with FP activities in 2 counties - Laikipia & Isiolo -helping improve diagnosis, treatment, and prevention of TB.

Challenges such as limited knowledge about the disease, resources and healthcare access remain. Here are CHATs achievements for the first half of 2025 for the 'TB project'.



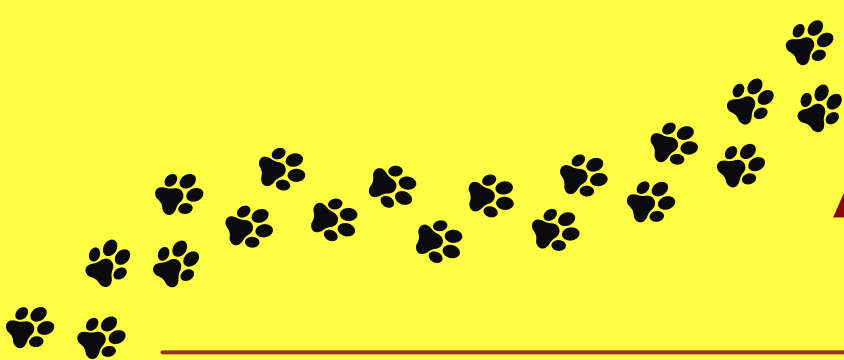
521 households of TB patients were visited for contact screening and referrals for presumptive cases

227 TB treatment interrupters physically traced. Those found were returned to treatment

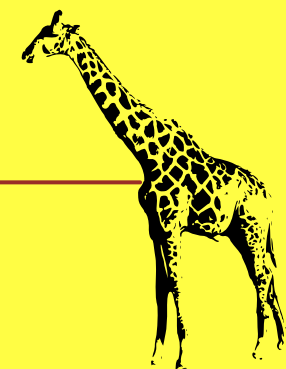
4354 Samples were referred for various tests through the sample referral network

"It is time to recognize that TB is a crisis, and to act accordingly. Failure to address it will mean condemning millions to suffer and die needlessly."

Kofi Annan (Former UN Secretary-General)



ACTIVITIES 'HIGHLIGHTS'



January 2025

- A hot, dry month which is normal for this time of year, but tough on all life
- CHAT continues to work with their 67 CORP partners in the 14 ecosystems, 19 counties, with a focus on providing door-to-door FP services
- CHAT's grassroots partners, the CORPs & Ministry of Health (MoH) - targeting communities in Laikipia and Isiolo counties, coordinate with 53 riders in these counties integrating FP activities with transportation of lab samples for testing.
- CHAT staff resumed work on January 7th after their annual leave taken in December.
- CHAT continues to draft and apply for grants, i.e submitting proposals to ensure continuity of funding and support for much-needed services.
- With support from the Global Fund Tuberculosis -GFTB project, CHAT facilitated trainings on the Community Health Basic Module for 168 Community Health Promoters (CHPs) in Laikipia County and 68 CHPs in Isiolo County. These sessions also included CHAT's CORP partners working in these 2 counties
- Conducted 2 X 10-day motor mobile integrated health clinics - integrating M&E with CHAT's focal FP services - and additionally basic curative treatment in Northern Rangelands & Ewaso Nyiro ecosystems.
- Monitoring & Evaluation continues daily or when necessary - and most reports compiled monthly.



February 2025

- CHAT continues to work with their 67 CORP partners in the 14 ecosystems, 19 counties, with a focus on providing door-to-door FP services
- CHAT's grassroots partners, the CORPs and Ministry of Health (MoH), target communities in Laikipia and Isiolo counties. They coordinate with 53 riders in these counties to integrate FP activities with the transportation of lab samples for testing.
- A supervision meeting was held in Nanyuki where CORPs converged for updates, refresher training and to strengthen their capacity to deliver quality health services. CHAT included the MoH to participate in the facilitation of this meeting.
- CHAT began developing detailed online maps with additional support from an intern to provide comprehensive insights into the communities it serves across its ecosystems. [See link](#) for an example of our work.
- A meeting with a CHAT partner donor resulted in additional funding, enabling CHAT to expand its motor mobile integrated health clinic services into communities neighbouring Loldaiga in Laikipia County.
- CHAT continues to draft and apply for grants, i.e., submitting proposals to ensure continuity of funding and support for much-needed services.
- Conducted 2 X 10-day motor mobile integrated health clinics - integrating M&E with CHAT's focal FP services - and additionally basic curative treatment in Northern Rangelands & Ewaso Nyiro ecosystems.
- Monitoring & Evaluation continues daily or when necessary - and most reports compiled monthly.





March 2025



- CHAT continues to work with their 67 CORP partners in the 14 ecosystems, 19 counties, with a focus on providing door-to-door FP services
- CHAT's grassroots partners, the CORPs and Ministry of Health (MoH), target communities in Laikipia and Isiolo counties. They coordinate with 53 riders in these counties to integrate FP activities with the transportation of lab samples for testing.
- CHAT hosted an exchange learning visit facilitated by a CHAT partner, The Nature Conservancy -TNC, welcoming delegates from Zambia, Tanzania, and the USA. The team visited government offices particularly the MoH in Nanyuki, the CHAT office in Nanyuki, and the CHAT garage and storage base 1 hour out of Nanyuki, then proceeded to CHAT's target beneficiaries "underserved communities to see/watch in action how CHAT integrates their PHE approach - that combines strong components of family planning and environmental conservation.
- The founding director of The Mirala Foundation - a Norwegian-based Foundation and supporter of CHAT, joined CHAT's M&E team for 10 days field visit to the Mid Great Rift valley, Mt.Elgon, Lake Victoria Basin, and Mara Wildlife Ecosystems, where she observed integrated health service delivery whilst engaging with communities and some of CHAT's CORPs partners.
- CHAT facilitated a discreet Impact Assessment sampling areas/communities that CHAT services have reached over the last 18+ years. The assessment revealed increasing generational support for family planning; only one community remained hesitant to access services despite having information. Apathy can be a challenge in some communities!
- CHAT continues to draft and apply for grants, i.e., submitting proposals to ensure continuity of funding and support for much-needed services.
- Conducted 2 X 10-day motor mobile integrated health clinics - integrating M&E with CHAT's focal FP services - and additionally basic curative treatment in Northern Rangelands & Ewaso Nyiro ecosystems.
- Monitoring & Evaluation continues daily or when necessary, and most reports are compiled monthly.
- Some rain arrived in late March!



April 2025

- CHAT continues to work with their 67 CORP partners in the 14 ecosystems, 19 counties, with a focus on providing door-to-door FP services
- CHAT's grassroots partners, the CORPs and the Ministry of Health (MoH), target communities in Laikipia and Isiolo counties. They coordinate with 53 riders in these counties to integrate FP activities with the transportation of lab samples for testing.
- An American philanthropist joined the CHAT team in the field to film and to better understand CHAT's modus operandi and impact in the communities. The film is forthcoming.
- A CHAT partner, TNC, initiated a six-week audit of CHAT's activities
- CHAT continues to draft and apply grants, i.e., submit proposals to ensure continuity of funding and support for much-needed services.
- Conducted 2 X 10-day motor mobile integrated health clinics - integrating M&E with CHAT's focal FP services - and additionally basic curative treatment in Northern Rangelands & Ewaso Nyiro ecosystems.
- Conducted a 20 day quarter motor mobile integrated health clinics to communities to Tana River Ecosystem
- Monitoring & Evaluation continues daily or when necessary - and most reports compiled monthly.
- The rainy season is here!





MAY 2025

- CHAT continues to work with their 67 CORP partners in the 14 ecosystems, 19 counties, with a focus on providing door-to-door FP services
- CHAT's grassroots partners, the CORPs and the Ministry of Health (MoH), target communities in Laikipia and Isiolo counties. They coordinate with 53 riders in these counties to integrate FP activities with the transportation of lab samples for testing
- 2 CHAT staff attended the CHASE Africa Annual Conference in Limuru - a suburb of Nairobi, where all CHASE's partners from East Africa convened to share learning and experiences.
- CHAT continues to draft and apply for grants, submitting proposals to ensure continuity of funding and support for much-needed services.
- AMREF's (a Kenyan based African registered NGO and partner with CHAT with a TB project) Program and Finance team visited the CHAT office and accompanied the team on OSDV (On-Site Data Verification) visits to activities in Laikipia and Isiolo Counties under the TB program.
- CHAT received software from ESRI with support from one of CHAT's longterm partners. Thos will help in improving CHATs mapping work.
- Conducted 2 X 10-day motor mobile integrated health clinics - integrating M&E with CHAT's focal FP services - and additionally basic curative treatment in Northern Rangelands & Ewaso Nyiro ecosystems.
- Monitoring & Evaluation continues daily or when necessary and most reports are compiled monthly.



JUNE 2025

- CHAT continues to work with their 67 CORP partners in the 14 ecosystems, 19 counties, with a focus on providing door-to-door FP services
- CHAT's grassroots partners, the CORPs and Ministry of Health (MoH), target communities in Laikipia and Isiolo counties. They coordinate with 53 riders in these counties to integrate FP activities with the transportation of lab samples for testing.
- At the request of a long-time' Kenyan donor/supporter, CHAT conducted an entry meeting in Turkana County - a county in northern Kenya for a pilot project aimed at increasing family planning services using CHAT's innovative PHE approach among girls in Lodwar.
- CHAT had 4 motor mobile integrated clinics going 'out' into the underserved communities this month - they are as follows:
 - a) CHAT included en route to Lodwar Monitoring and Evaluation (M&E) in various ecosystems—Suguta Valley, Mt Elgon Eastern Rift Valley. They included a courtesy meeting at the request of the Kenya supporter with Keringet school for the hearing impaired in Kapenguria- West Pokot County. The result of this is when the they hold a workshop in December for sign language training, CHAT hopes to include some CORPS to participate.
 - b) Another CHAT team of 2 staff departed on a 3 week motor mobile - integrating health with FP services and M&E activities to the Mau, Mara, Amboselli (Mt Kilimanjaro ecosystem) & Tana River
 - c) Additionally CHAT conducted their usual monthly 2 X 10-day motor mobile integrated health clinics - integrating M&E with CHAT's focal FP services - and additionally basic curative treatment in Northern Rangelands & Ewaso Nyiro ecosystems.
- Monitoring & Evaluation continues daily or when necessary, and most reports are compiled monthly.



On behalf of the underserved communities CHAT reaches, we extend our sincere gratitude for your unwavering support towards our mission.

For a very interesting 4 minutes please watch [CHATs Profile](#)

How to support CHAT:



<https://www.globalgiving.org/donate/6423/communities-health-africa-trust/>



Paybill Number: **4110873**
For the account number section, please put **your name**.

More information on other ways to donate can be found on: <https://chatafrica.org/give.html>

Click on the icons below for more information about CHAT:



www.chatafrica.org



[@communitieshealthafricatrust](#)



[@communitieshealthafrica](#)



mobileclinicsafrica@gmail.com



[Communities Health Africa Trust \(CHAT\)](#)